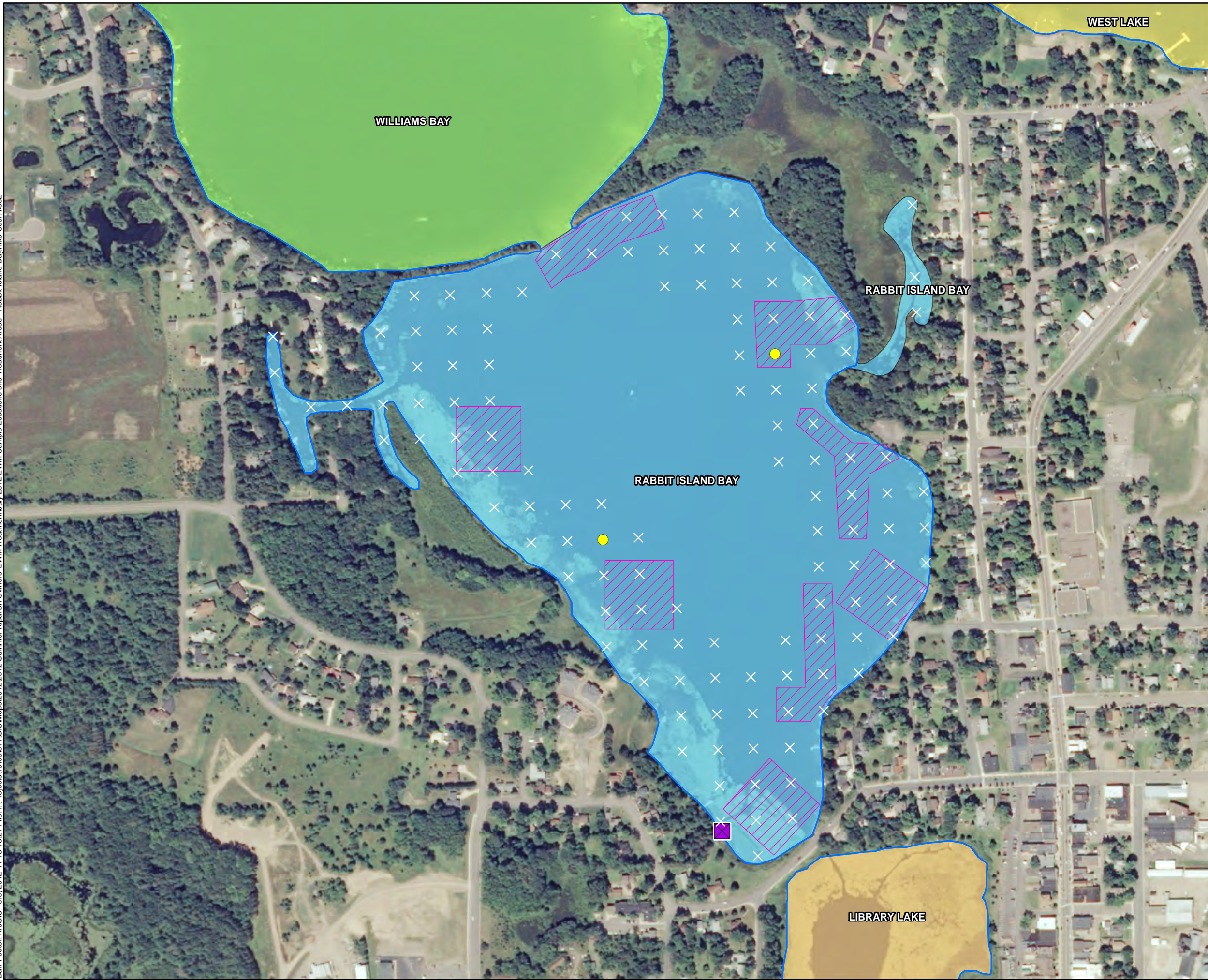


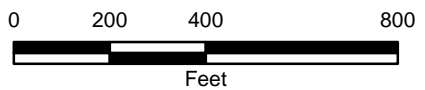
Appendix N

2012 Riparian Owners' Summer EWM Treatment

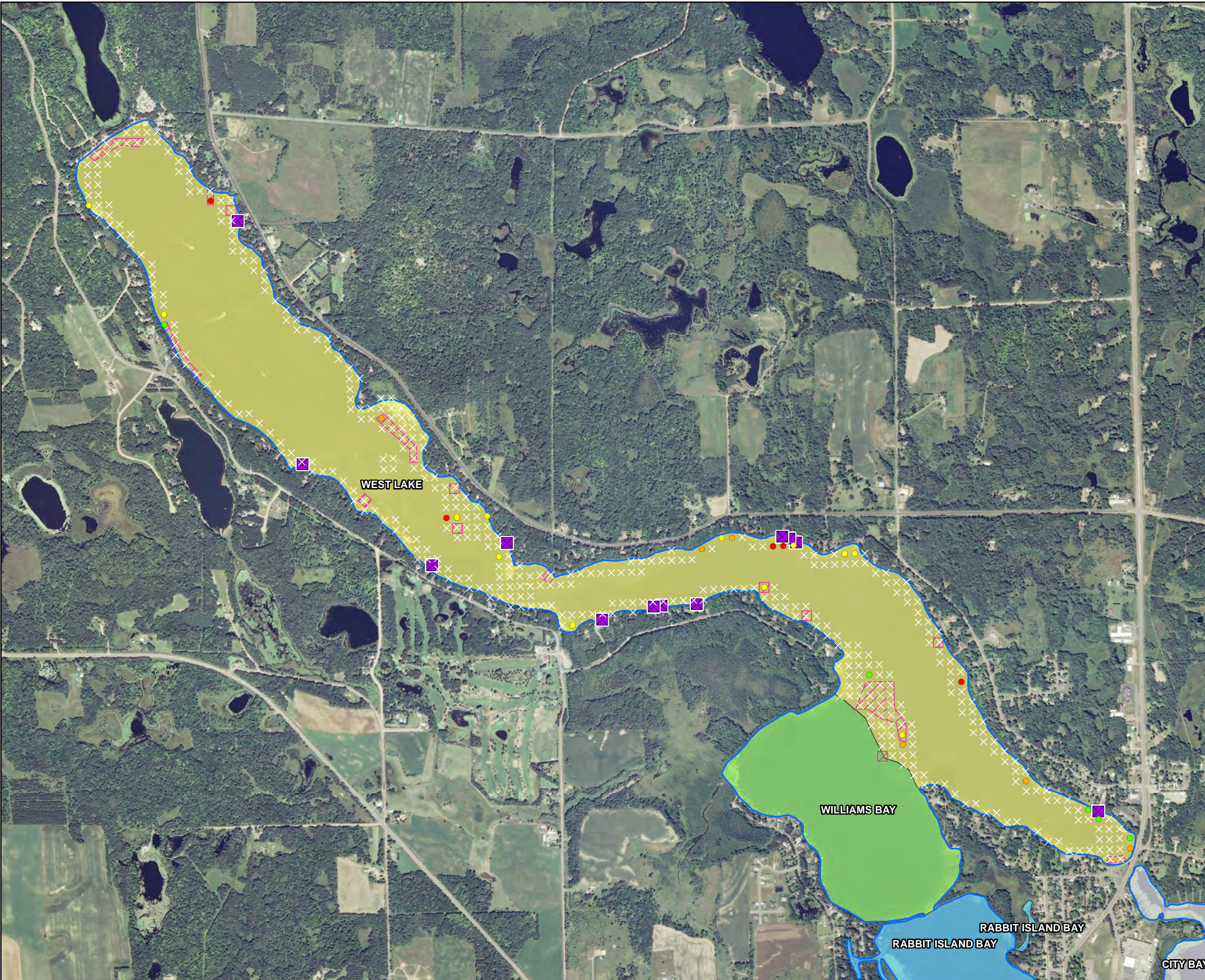
Barr Footer: ArcGIS 10.0, 2012-11-13 13:21 File: I:\Projects\49\03\01\GIS\Maps\2012\2012 Summer Riparian Owners' EWM Treatment\July 2012 EWM Sample Locations and Treatment Areas - Rabbit Island Bay.mxd User: kac2



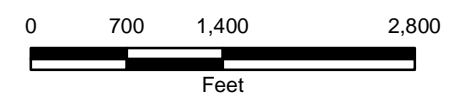
- EWM Observations (July 2012)
- Visual - None on Rake
 - Density = 1
 - Density = 2
 - Density = 3
 - × No EWM Present
 - ▨ 2012 EWM Spring Treatment Areas
 - ▨ 2012 Summer Riparian Owners' EWM Treatment



July 2012 Eurasian Watermilfoil
Sample Locations and Treatment
Areas - Rabbit Island Bay
West Beaver Dam Lake
Barron County, WI
N-1



- EWM Observations (July 2012)
- Visual - None on Rake
 - Density = 1
 - Density = 2
 - Density = 3
 - × No EWM Present
 - ▨ 2012 EWM Spring Treatment Areas
 - ▨ 2012 Summer Riparian Owners' EWM Treatment



July 2012 Eurasian Watermilfoil
Sample Locations and Treatment
Areas - West Lake
West Beaver Dam Lake
Barron County, WI
N-2